

Future(s) of Higher Education Dilemmas and Questions.

Gábor Király Ph.D.

Future of Higher Education Research Center

Scientific Director



Session moderators

- Professor Jan Burdukiewicz: Vice Rector for International Relations and Projects at University of Wrocław, Poland.
- Assoc. Prof. Jana Péliová: Vice Rector for Managing International Projects at the Economic University of Bratislava, Slovakia.

Aim of the workshop

- Discuss dilemmas in relation to the future of Higher Education
 - Reflect on the arguments, expectations and values that guide our decisions
- Create a space for exchanging ideas and building connections
 - there are no „right“ answers or decisions

Old joke (...still works though)

- What kind of romantic partner are you looking for? Somebody who (is)...
 - kind and empathetic.
 - great with kids.
 - sad when I'm sad, happy when I'm happy.
 - always happy and waits for me at the door when I get home.
 - can go for long walks with me and listens to me intently when I share my thoughts.

Your ideal partner is:



What HEIs should contribute to...

- professional formation of students
- their personal growth
- the development of a learning/growth/entrepreneurial/gritty/creative mindset(s)
- the development of responsibility towards the future
- research & development, innovation
- building (inter)national networks and cooperating with social and economic partners
- local/urban/regional development
- economic growth



[Rauchmeldershop - Rauchmelder Shop](#)

Thinking about automotive design...



[Palladino Honda](#)



[Autos MaxAbout](#)



[toyota.com](#)

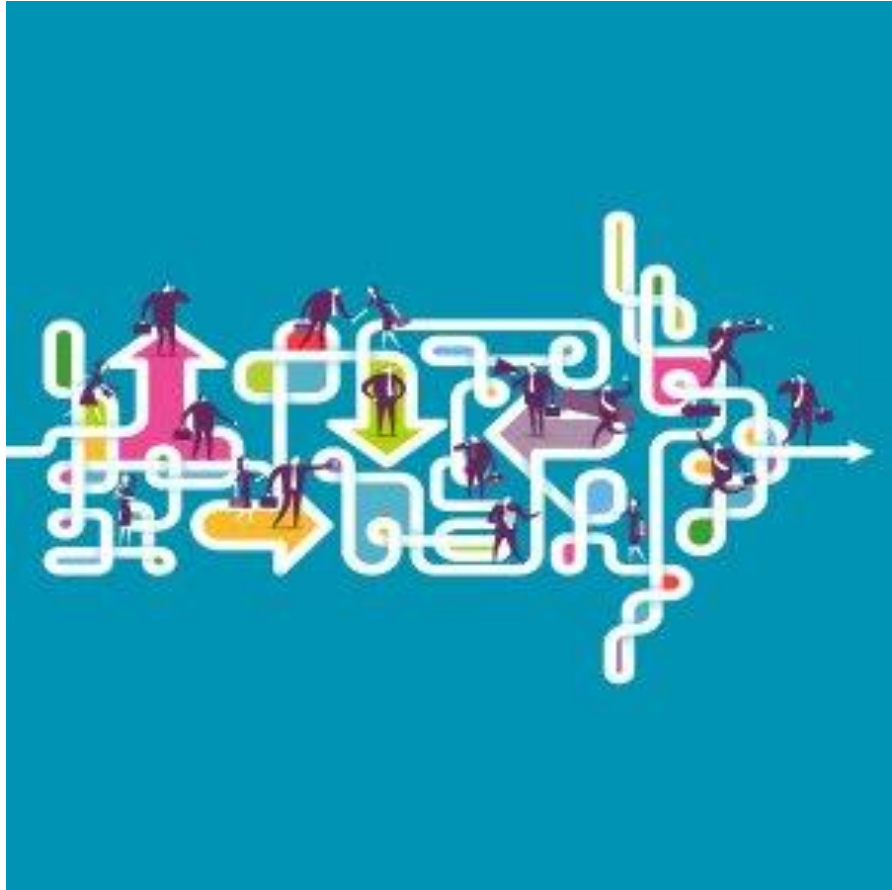


[Ersatzteile Lada Niva](#)

What's

Next?

Education is *per definitionem* future-oriented



- Decisions can be based on expectations about the future of...
 - learning
 - work
 - the HE sector (including competitors)
 - the labour market
 - the structure of the economy
 - society in general

Q1: How to teach?

Where/how did you experience *true* learning (deep, long-lasting, transferable)?

Possibly through practice in an environment:

- meaningful
- feedback rich
- offering expert support
- involving both emotionally & intellectually
- maybe embedded in a learning community



[Practice Gallery](#)

Discussion in small groups

- Please form small groups, preferably with people who you do not know (yet)
 - read the dilemma first then discuss how you would decide and why
 - please listen intently to others & try to connect to their thoughts
 - collect the arguments for each side with the session moderators
- Time limit: 10-15 minutes

Architecture as a metaphor

- Designing spaces for living (or learning)
 - Flat, house, (maybe a school)
 - How will people utilise this space?

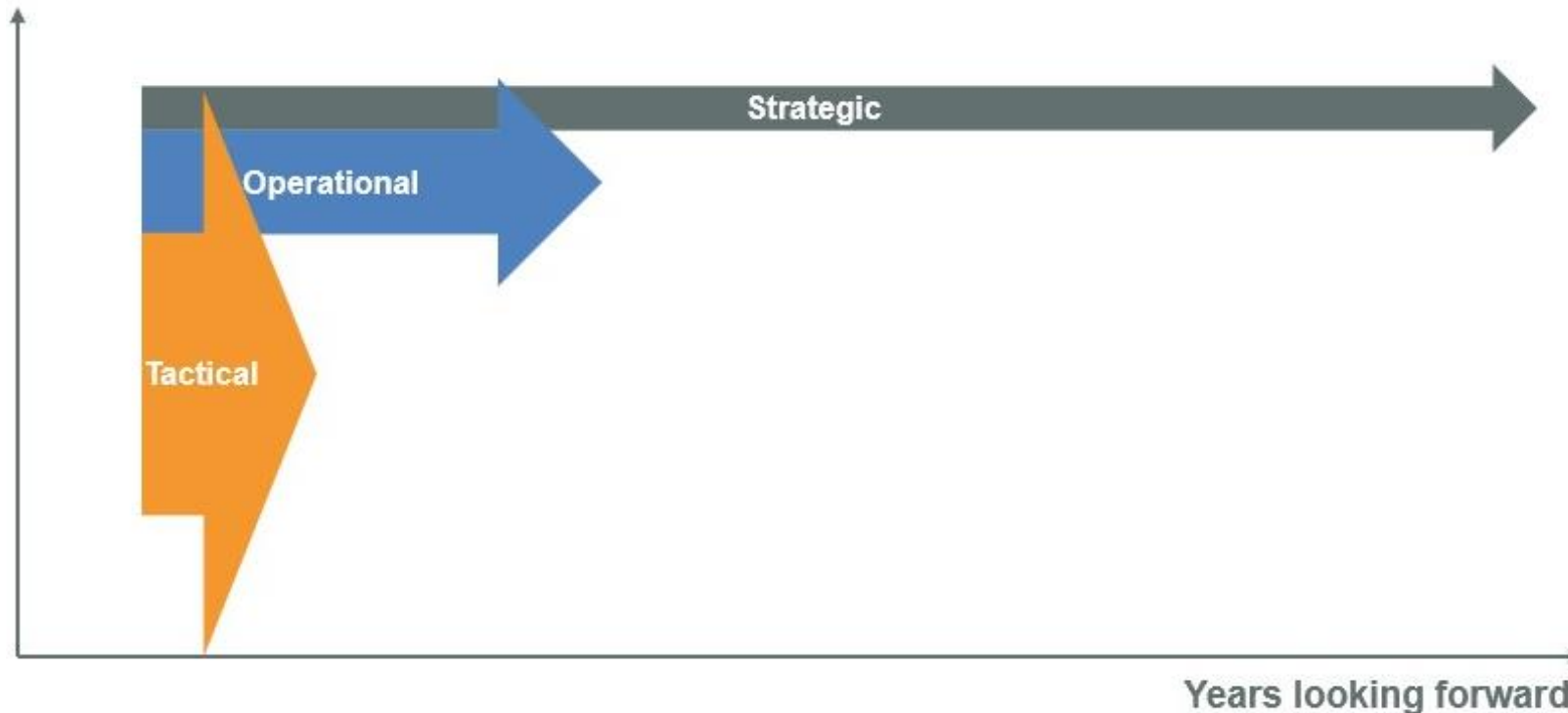
- Or taking the long view:
 - How do you design a new part of the city for the next 30-40 years?
 - allowing for space-to-come



<http://www.nordhavnen.dk/english/uk-nh-transformation2/uk-nh-nordhavnen.aspx>

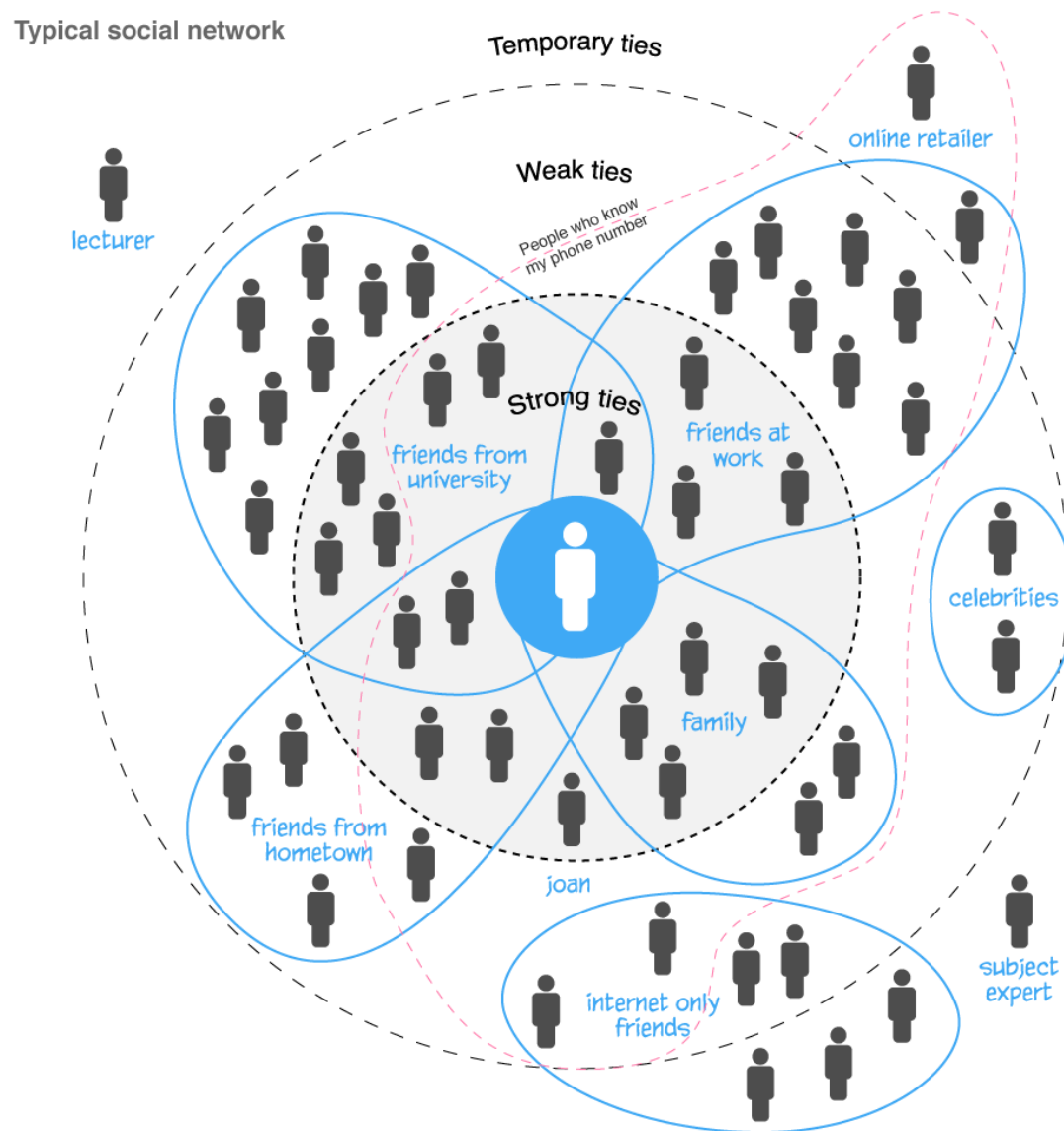
Q2: What is the ideal time horizon for HE programmes?

- Should we design our courses for the next 5-10 years or for the next 40-50?



Social networks

- Hyperdiadic relationships:
 - we not only affect our friends but our friends' friends and...
 - we are not only responsible for ourselves but we affect many others around us
- Circles of influence
 - shaping the lives of others



Q3: What/Who HEIs (intended) circle of influence might include?

only the economic sphere

or...

also the social and environmental spheres?



http://bursa.listedcompany.com/misc/ar2015/Bursa_AR15_html/corporate-sustainability-statement.html

Contact

@: kiraly.gabor@uni-bge.hu

web: [https://www.researchgate.net/profile/Gabor Kiraly](https://www.researchgate.net/profile/Gabor_Kiraly)